



Thank you to our Business Member Sponsors!



CYC Puget Sound/Shilshole Evening Series

2023 Sailing Instructions

1 RULES

- 1.1 This regatta will be governed by the rules as defined in the Racing Rules of Sailing (RRS).
- 1.2 US Sailing prescriptions to the following rules apply: RRS 25.1, 32, 34, 60.3, 61.4, 63.1, 63.2, 64.4(b), 67, 70.5(a), 76.1, 81, 86.3, 88.2, Appendix G and R. Inclusion of additional prescriptions may be noted elsewhere in the Notice of Race or Sailing Instructions. US Sailing prescriptions are available at www.ussailing.org.
- 1.3 Changes to the rules may be noted elsewhere in the Notice of Race or Sailing Instructions. If the Notice of Race and Sailing Instructions are in conflict, the Sailing Instructions have precedence.

2 NOTICES TO COMPETITORS

- 2.1 Notices to competitors will be posted on the official notice board and optionally on the CYC website at www.cycseattle.org. The official notice board is located by the main entrance to the CYC Clubhouse.
- 2.2 The race committee may provide unofficial communication, which is communication not governed by the rules, at any time by hail or over VHF. A request for redress may not be based on any aspect of unofficial communication, including content, timeliness, or failure to hear. This changes RRS 62.1(a).
- 2.3 See class list for preferred VHF radio channel.

3 CHANGES TO SAILING INSTRUCTIONS

- 3.1 Changes to the Sailing Instructions posted on the official notice board will be posted by 0930 the day it takes effect, except that any change in the schedule of races will be posted by 1800 the day before it takes effect.

4 SCHEDULE

- 4.1 The schedule is as follows:

	<u>Wednesday Series</u>	<u>Thursday Series</u>
Spring Series	April 19, 26, May 3, 10, 17	April 20, 27, May 4, 11, 18
Solstice Series	May 24, 31, June 7, 14, 21, 28	May 25, June 1, 8, 15, 22, 29
Summer Series	July 5, 12, 19, 26, August 2	July 6, 13, 20, 27, August 3
Fall Series	August 9, 16, 23, 30, Sept 6, 14	August 10, 17, 24, 31, Sept 7, 15

- 4.2 Up to 4 races may be sailed each day with a typical race duration of 20 to 30 minutes.
- 4.3 First warning signal at 1815 hours. Racing intended to conclude prior to nautical twilight.



5 SIGNALS MADE ASHORE

- 5.1 Signals made ashore will be made from a race committee signal boat while moored at Shilshole Marina at the CYC clubhouse, dock W, or dock X.
- 5.2 When flag AP is displayed ashore, the warning signal will be made not less than 30 minutes after the removal of AP unless at that time the race is postponed again or abandoned. This changes RRS Race Signals AP.

6 RACING AREA AND RACE COMMITTEE SIGNAL BOAT

- 6.1 The racing area is Puget Sound in the vicinity of the Shilshole Marina
- 6.2 The race committee signal boat will be the CYC M/V YC 5. If necessary, an alternate race committee signal boat may be used. The race committee signal boat will display the CYC burgee and a blue "R/C" flag or sign.

7 CLASSES

- 7.1 Wednesday Nights: Keelboat with current PHRF ratings and one-design keelboats, Thursday Nights: One -design keelboats and dinghies. Other fleets with at least five boats may apply. A combined class start may be designated during the series.
- 7.2 The class list and flag assignments will be announced as a notice to competitors issued by 1800 the day prior to each series. Subsequent changes may be made with the same process as changes to the Sailing Instructions.

8 COURSES

- 8.1 The course will be signaled from a reader board on the race committee signal boat. The course description is a series of letters on one row indicating the marks and their required sequence. The first letter displayed is the starting mark buoy, the last letter is the finishing mark buoy, and the letters between are rounding marks. The class number or symbol may precede the course for that class and must be shown if there are multiple rows. Multiple classes may be listed on one row.
- 8.2 Marks are specified in Attachment A: Mark Descriptions, and in the CYC Race Book.
- 8.3 All rounding marks other than gate marks and mark F must be left to port. When mark F is used as a rounding mark, a boat must also cross the finishing line from the direction of the last mark when rounding, leaving F to port or starboard depending on the course. When mark S is used as a rounding mark following a leeward mark, a boat must also cross the starting line from the direction of the last mark when rounding.
- 8.4 A leeward rounding mark may be a gate mark. If one of the gate marks is missing, the course at that mark is to round the remaining mark to port.
- 8.5 If a starting or finishing mark is substituted by an object displaying flag M, repetitive sound signals are not required. This changes RRS 34(b).
- 8.6 After completing the first leg of the course:
 - a) On Wednesday Nights: A boat shall not cross the finishing line unless she is finishing or rounding the finishing mark buoy as a rounding mark.
 - b) On Thursday Nights: A boat shall not cross the starting line or finishing line unless she is finishing or rounding the mark buoy as a rounding mark.This changes RRS 28.2. A boat that fails to observe this restriction may exonerate herself by taking a Two-Turns Penalty as described in RRS 44.2. This changes RRS 44.1 but does not change RRS 44.1(b). A boat that fails to exonerate herself may be scored NSC without a hearing and may be protested by another competitor. The RC will make a best effort to properly score boats NSC, but may not notice all violations of this SI. This changes RRS 63.1 and A5. The Finishing line and marks (on Wednesday) or the Starting and Finishing line and marks (on Thursday) are an obstruction and not a mark for a boat required to keep clear.
- 8.7 Except when rounding Mark E as a mark of the course, a boat must not enter the area near the Shilshole Bay Marina South Entrance between Shilshole Bay lighted entrance buoy G "1", lighted entrance buoy R "1", and breakwater light G "3". A boat that fails to observe this restriction may not exonerate herself. This area is an obstruction for a boat required to keep clear.



9 THE START

- 9.1 The starting line will be between a staff displaying an orange flag on the race committee signal boat and the course side of the starting mark buoy.
- 9.2 Starting sequence:
Wednesday: There will be a 5-minute starting sequence.
Thursday: There will be a 3-minute starting sequence.
- 9.3 If a general recall for a preceding class is signaled after the warning signal of a succeeding class, then the visual signals for the succeeding class will be removed and the start of the succeeding class will be considered abandoned without further signal.
- 9.4 If a boat is subject to RRS 29.1, Individual Recall, or RRS 30, Starting Penalties, the race committee may attempt to hail her sail number directly and on VHF. This is unofficial communication as in Sailing Instructions 2.2.
- 9.5 Starting time limits:
Wednesday: A boat starting later than 5 minutes after her starting signal will be scored Did Not Start (DNS). This changes RRS A5.1.
Thursday: A boat starting later than 3 minutes after her starting signal will be scored Did Not Start (DNS). This changes RRS A5.1.
- 9.6 A boat whose warning signal has not been made must avoid the starting area when other boats are racing but have not yet started.
- 9.7 The race committee signal boat, when a starting mark, may maneuver to maintain the starting line at any time, including while anchored.

10 THE FINISH

- 10.1 The finishing line will be between a staff displaying a blue flag on the race committee signal boat and the course side of the finishing mark buoy.
- 10.2 The race committee may adjust the finishing marks to maintain the finishing line without regard to RRS 33.

11 TIME LIMIT

- 11.1 The time limit is the maximum allowable time from a boat's starting signal to her finishing time. A boat that does not finish within her time limit will be scored Did Not Finish (DNF). This changes RRS 35.
- 11.2 Time limit is 40 minutes for the first boat in class and for other boats 20 minutes after the first boat that sails the course.

12 PROTESTS AND PENALTIES

- 12.1 A boat intending to protest or request redress for an incident that occurred while racing must orally notify the race committee on the signal boat as soon as reasonably possible after retiring or finishing by hail or VHF until she receives an oral confirmation from the race committee. This changes RRS 61.1(a).
- 12.2 Written protests and requests for redress must be delivered within 24 hours by hand or email to the CYC Office, office@cycseattle.org, attention to Protest Committee.
- 12.3 Hearing notices will be sent to the parties by email or telephone to inform them of the time and place of the hearing within 24 hours of receipt.
- 12.4 A boat may not protest another boat for Sailing Instructions 9.6. This changes RRS 60.1(a)
- 12.5 RRS Appendix V2, Post-Race Penalties, applies.
- 12.6 RRS 44.1 is changed so that the Two-Turns Penalty is replaced by the One-Turn Penalty, except for taking a penalty for an incident that occurred in the zone of a mark, other than a starting mark, that she is required to leave on one side. Violations of 18.6 require a two-turns.



- 12.7 A boat may not protest another boat for Sailing Instructions 9.6. This changes RRS 60.1(a)
- 12.8 RRS Appendix V2, Post-Race Penalties, applies.
- 12.9 RRS 44.1 is changed so that the Two-Turns Penalty is replaced by the One-Turn Penalty, except for taking a penalty for an incident that occurred in the zone of a mark, other than a starting mark, that she is required to leave on one side. Violations of 18.6 require a two-turns.

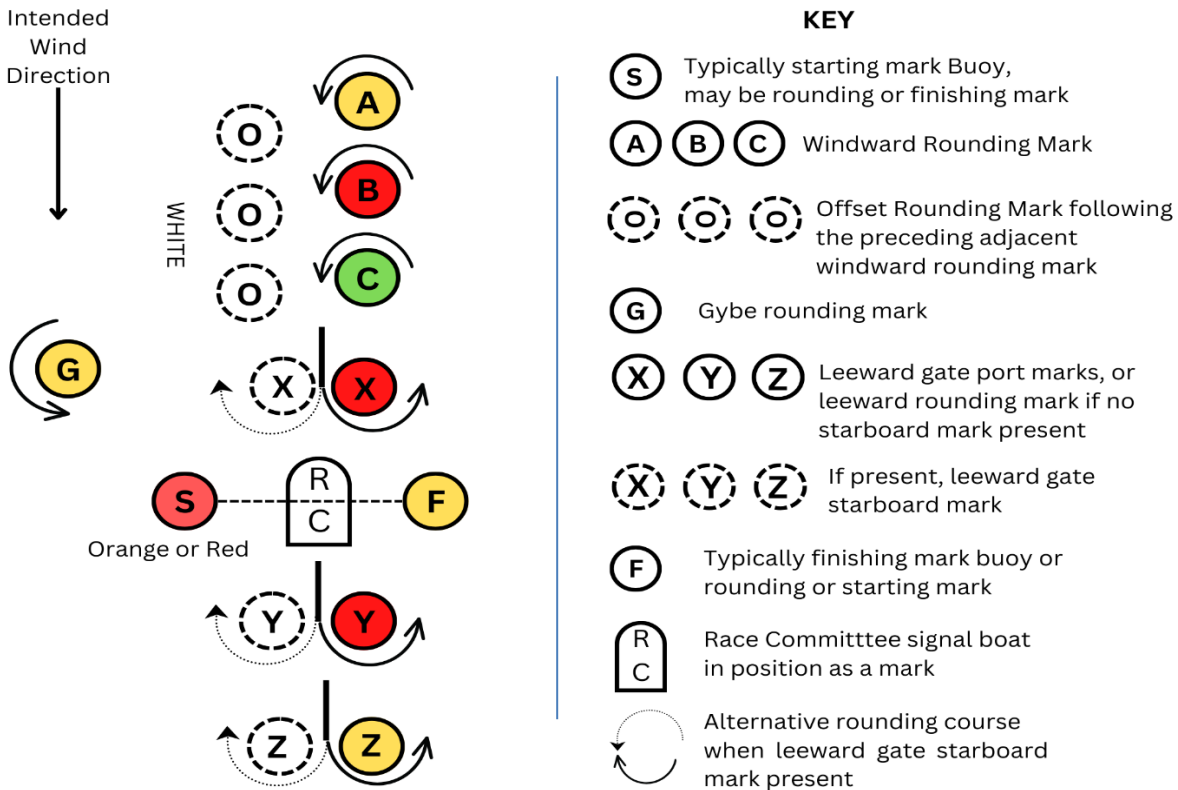
13 SCORING

- 13.1 Boats will be scored in class.
- 13.2 A boat that did not start (OCS), did not sail the course (NSC), did not finish (DNF), retired (RET), or was disqualified (DSQ, DNE, DGM, UFD, BFD) shall be scored points for the finishing place one more and a boat that did not start (DNC, DNS) shall be scored points for the finishing place two more than the number boats starting, sailing the course, and finishing and not retiring or being disqualified. This changes RRS A5.2.
- 13.3 A boat's series score will be the total of her race scores, except that a boat's worst score will be excluded if six or more races are completed. This changes RRS A2.1. One race will constitute a series.

14 EQUIPMENT AND OPERATING REQUIREMENTS

- 14.1 Sailing is an activity that has an inherent risk of damage and injury. Competitors in this event are participating entirely at their own risk. See RRS 3, Decision to Race. The responsibility for a boat's decision to participate in a race or to continue racing is hers alone. The race organizers (organizing authority, race committee, technical committee, protest committee, host club, sponsors, or any other organization or official) will not be responsible for damage to any boat or other property or the injury to any competitor, including death, sustained as a result of participation in this event. By participating in this event, each competitor agrees to release the race organizers from any and all liability associated with such competitor's participation in this event to the fullest extent permitted by law.
- 14.2 All boats racing must comply with their one-design class rules as well as relevant US Sailing Safety Regulations.
- 14.3 All boats must comply with the safety regulations of the US Coast Guard as identified in the Notice of Race.
- 14.4 The race committee or technical committee may inspect a boat at any time before or after racing for compliance with requirements.
- 14.5 Competitors may put biodegradable sail stops in the water when hoisting a sail. This changes RRS 47.
- 14.6 In addition to the requirements of RRS Part 2 preamble, a boat may not impede the passage, cross ahead within $\frac{3}{4}$ nautical miles, or continue to approach within $\frac{1}{4}$ nautical miles (approximately 1500 feet) to the side of a commercial or government vessel over 30 meters in length (including tug and tow) either following a traffic lane or traveling over 15 knots. Boats must follow instruction from the race committee to alter course to avoid vessels based on the race committee's interpretation of these requirements.

Attachment A: Mark Descriptions



Buoy Course Marks (position relative to R/C)

The course diagram for buoy course marks shows the general orientation of the race committee signal boat ("R/C"), other marks (identified by the letters S, A, B, C, O, G, X, Y, Z and F), and the intended wind direction. All buoy course marks other than the race committee signal boat are inflatable buoys. Positions are approximate and the diagram is not to scale.

Notes:

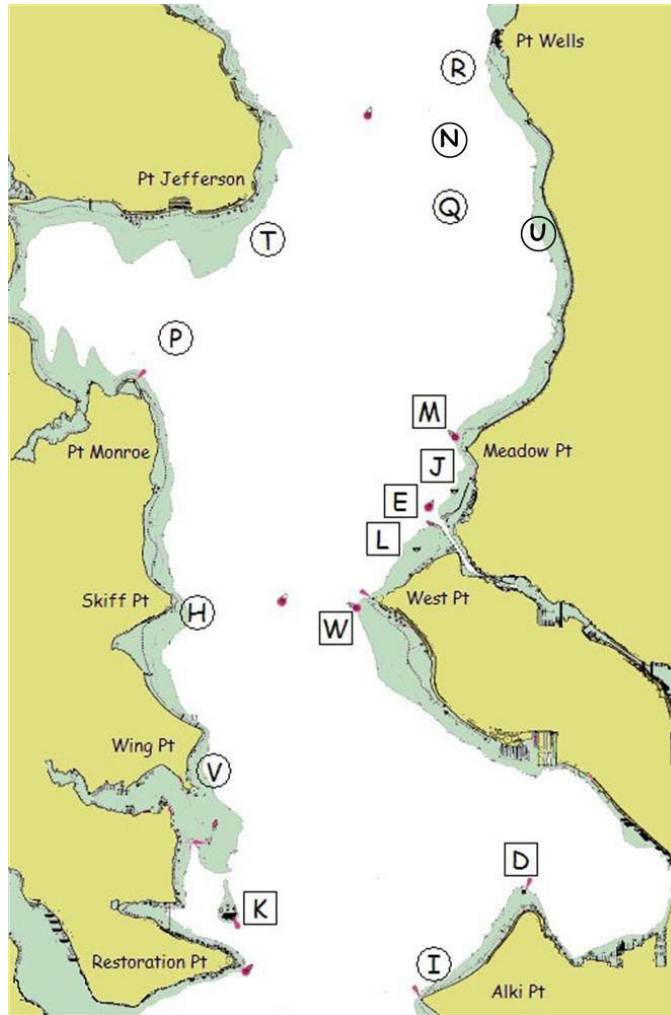
S When a starting mark for a downwind start, may be on either side of the race committee signal boat.

XX When XX is signaled in the course description, mark X may be a gate.

YY When YY is signaled in the course description, mark Y may be a gate.

ZZ When ZZ is signaled in the course description, mark Z may be a gate.

Geographic Marks (position based on location)



Bearings are magnetic. Distances are nautical miles (NM). Bearings, distances, and positions are approximate. Each temporary mark is shown with its label in a circle. Each permanent mark is near its label in a square box.

- D Duwamish Head Lt. (LL #16910)
- E Shilshole Bay Entrance Lighted Buoy G "1" (LL #18125)
- H Temporary mark 0.3 NM E of Skiff Pt.
- I Temporary mark 0.5 NM N of Alki Pt.
- J Round ball buoy with flag 0.25 NM SSW of marina N entrance
- K Blakely Rock (LL #16830)
- L White buoy 0.5 NM SW of marina S entrance
- M Meadow Pt. Buoy (LL #16765)
- N Temporary mark 1.5 NM E of Traffic Separation Lane Lighted Buoy SF (LL #16745)
- P Temporary mark 0.5 NM NNE of Pt. Monroe
- Q Temporary mark 3.0 NM bearing 340° from Meadow Pt. Buoy
- R Temporary mark 0.5 NM SW of Pt. Wells
- T Temporary mark 0.5 NM SE of Pt. Jefferson
- U White spar buoy 2.9 NM bearing 6° from Meadow Pt. Buoy at 47°44.4N, 122° 22.95W
- V Temporary mark 0.3 NM NNE of Wing Pt.
- W West Pt. Buoy (LL #16805)