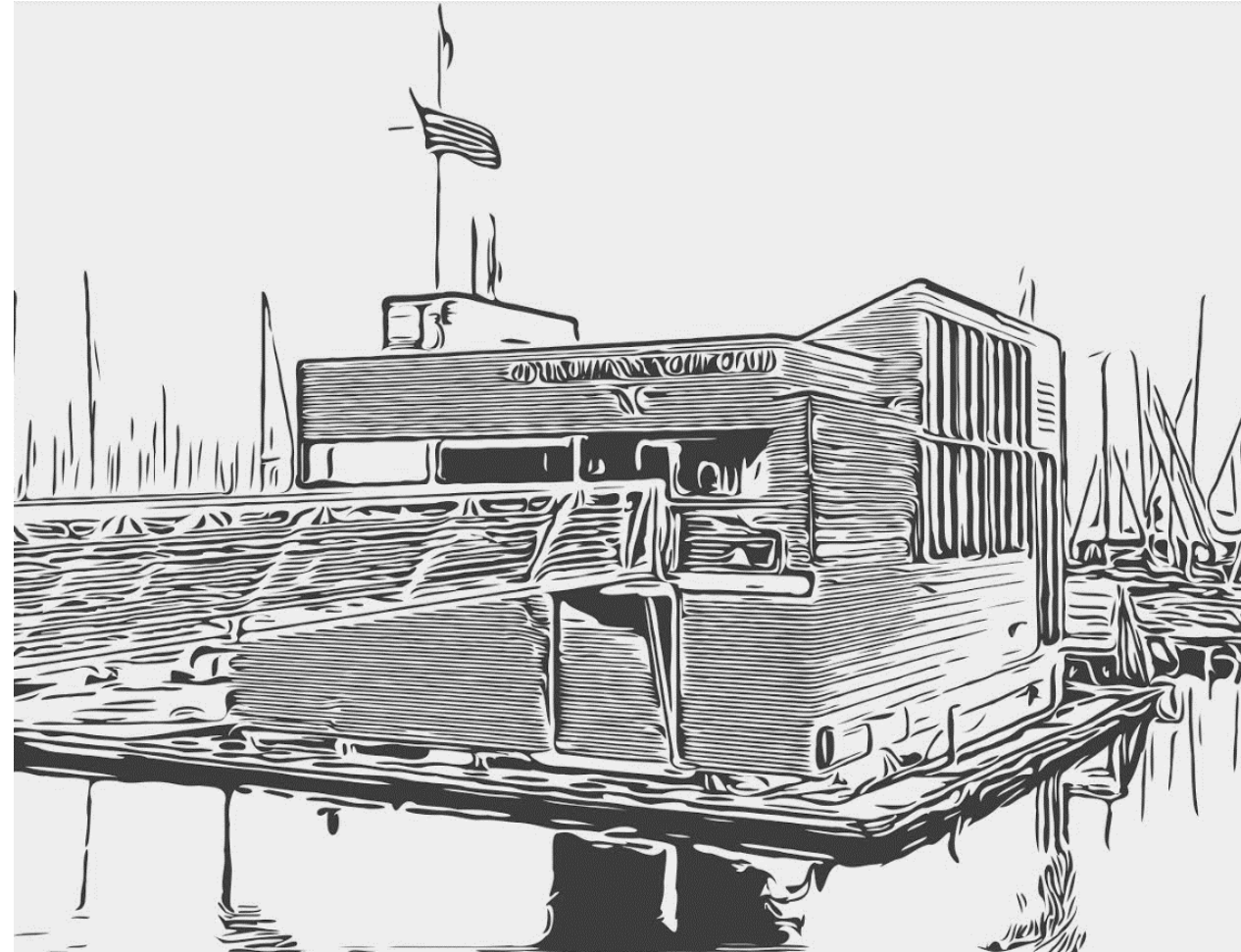




# Haulout status update

May 13, 2020



A 25 year + investment to reach our 2045 centennial!

# Agenda

---

- Introductions and overview of the journey
- Vendor selection
- Schedules
- Renderings and architectural considerations
- Modifications to Clubhouse Functions
- Next Steps
- Q&A

# Introductions & Overview of Journey to date

---

## Primary team:

- Keith Whittemore, Wayne Balsiger, Stuart Burnell, Cindy Barrett, Steve Johnson, Noel Morgan, David Barnes, LUDD, and Dyna

## Yearly progress:

2017 – kickoff of Heart of CYC multi-year capital campaign

2019 – buy-in/meeting with the Port and other regulations (US Coast Guard)

– Started contacting vendors for firm 2020 quotes

2020 – Full Time volunteer efforts on selecting vendors, reviewing contracts, addressing all the very small details, coordinating permits/insurance

# Vendor selection

---

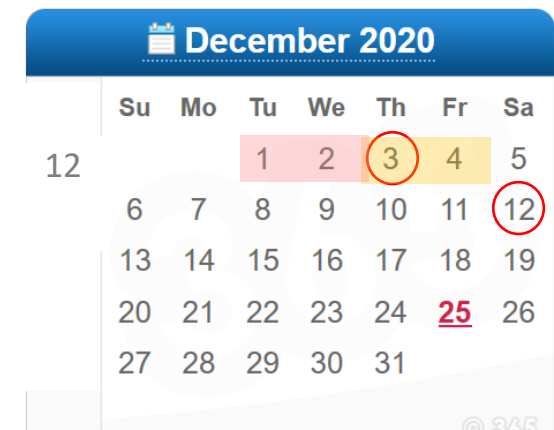
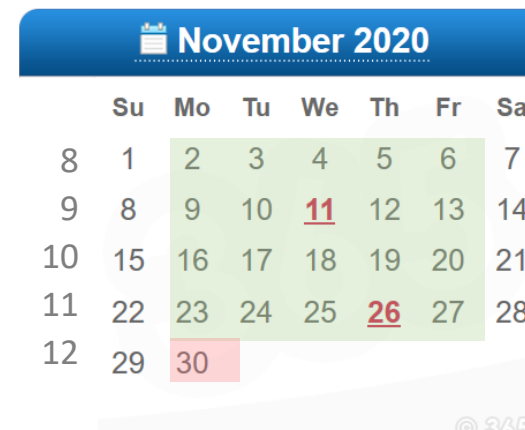
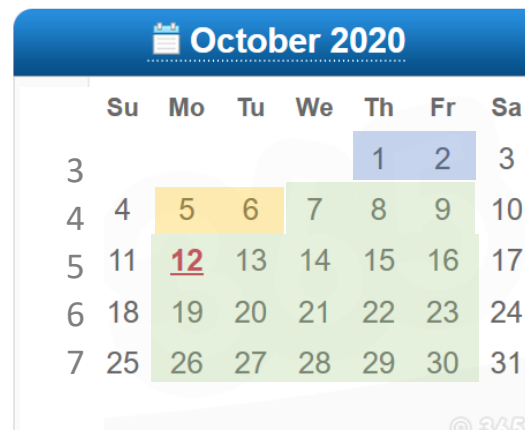
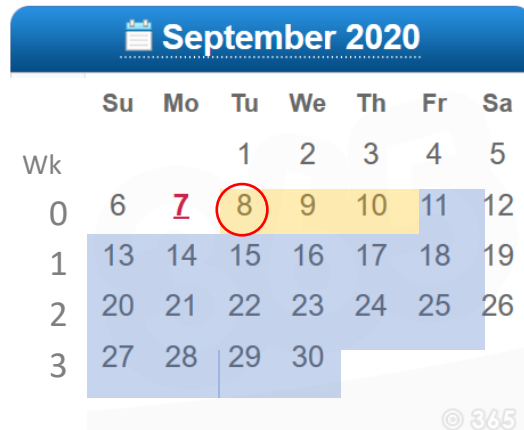
- Vendors scored on various attributes:
  - Prior experience on similar projects
  - Reputation for workmanship and customer satisfaction
  - Ability to meet our schedule & requirements
  - Cost



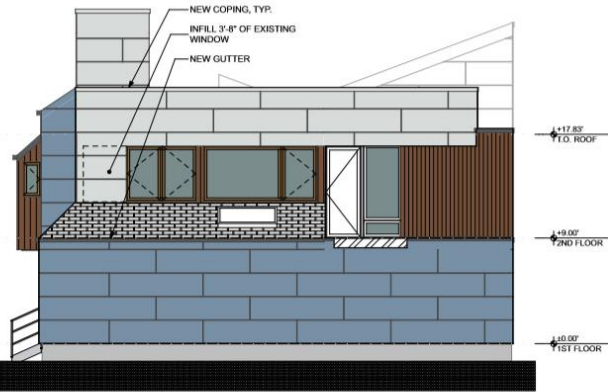
- In most cases, at least 3 quotes were gathered for every Work Statement
  - i.e. tugboat move, crane for gangplank disconnect, electrical and water disconnect)

# Schedule

- Highly discreet Gant charts are being used to manage the schedule
- High level summary is as follows:

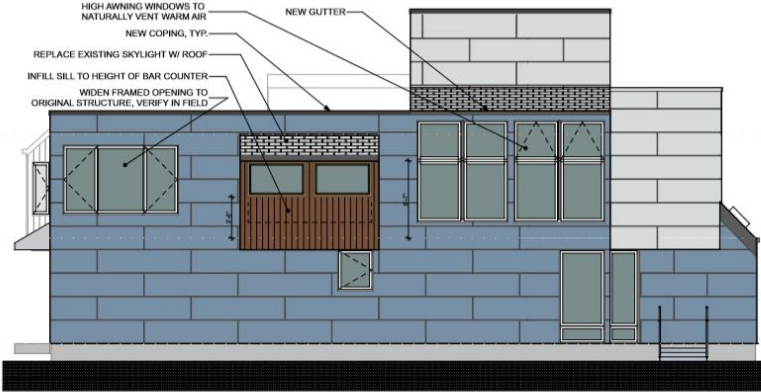


A 25 year + investment to reach our 2045 centennial!



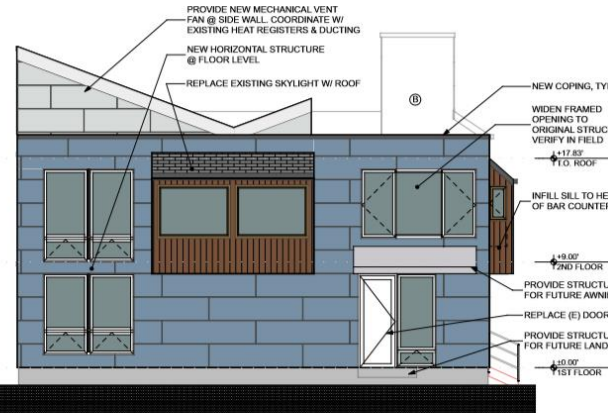
**EAST ELEVATION**

SCALE: 3/16" = 1'-0"



**SOUTH ELEVATION**

SCALE: 3/16" = 1'-0"



**WEST ELEVATION**

SCALE: 3/16" = 1'-0"



**NORTH ELEVATION**

SCALE: 3/16" = 1'-0"

Ⓐ HARDIE PANEL SIDING, DARK



Ⓑ HARDIE PANEL SIDING, LIGHT



Ⓒ KNOTWOOD VERTICAL ALUMINUM CLADDING, COLOR: KWILA



**JOHNSON OAKLIE**  
ARCHITECTURE & PLANNING LLC

2124 THIRD AVENUE, SUITE 200  
SEATTLE, WA 98121 206-448-7590



DRAFT

NO.	DESCRIPTION	DATE
REVISIONS		
PROJECT NO:	2020 02 CYC	
DATE:	April 2020	
DRAWN BY:	EL	
APPROVAL:	SJ, JO	

**CYC Re-clad & Window Replacement**  
7755 Seaview Ave NW  
(Pier V) Seattle WA 98117

ELEVATIONS

BID

SHEET NO:

**SCHEME 1**



NE CORNER



NW CORNER



SE CORNER

# Modifications to Clubhouse Functions

---

- Cruising, Racing, and Socials will continue (COVID permitting)
- Alternative locations for post-race festivities and socials will be identified and coordinated
  - On the docks, or a raftup
  - Nearby restaurants, clubs, civic buildings, sailing “partners”, etc...
  - Some events will bypass a formal post-race get-together
  - Zoom or webcast for educational events, as appropriate
  - Open to ideas

With COVID this year, 2020 may prove to be an especially quiet season to complete this work.

# Next steps

---

- We will be conducting a phonathon starting on Saturday, to try at reach 80-90% participation
  - With COVID, some families may simply not be able to participate
- If all remaining families (who have yet to donate) on average pledged about \$500, we would reach our goal
- We are contemplating a modest debt/loan to bridge the gap

*Please consider becoming a new donor or a follow-on donation. This takes a village.*





Thank you and good night!